

BEVERLY AND SALEM CLIMATE ACTION & RESILIENCE PLAN



RESILIENT TOGETHER

OUR BRIDGE TO A STRONGER TOMORROW

THE CITIES OF BEVERLY AND SALEM HAVE PARTNERED TO CREATE RESILIENT TOGETHER: OUR PLAN TO TAKE COLLECTIVE ACTION IN THE FACE OF THE CLIMATE CRISIS.

Along the North Shore, Beverly and Salem form a hub of history, culture, and economic activity. Linked by bridges and a shared rich heritage, Beverly and Salem are also connected by a collective vision for a resilient future in the face of climate change. We are embracing a proactive, collaborative approach as we develop a Climate Action and Resilience Plan that ensures we remain inclusive and thriving communities, attractive and accessible to diverse families and businesses.

BEVERLY AND SALEM ARE EXPERIENCING THE FOLLOWING CLIMATE IMPACTS:



INTENSE STORMS



SEA LEVEL RISE



DROUGHT



FLOODING

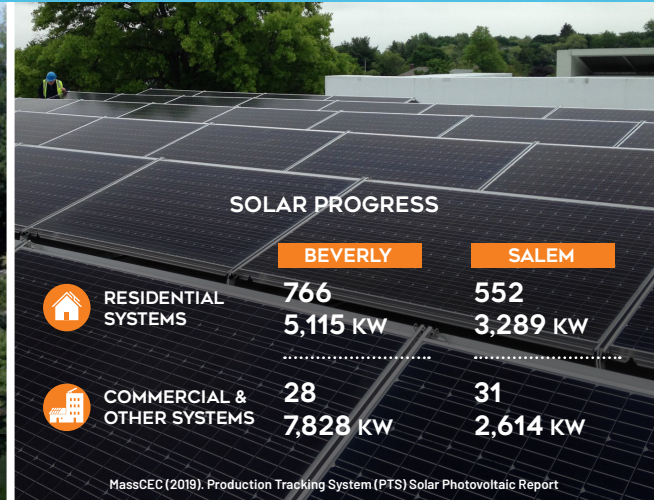


HEAT WAVES

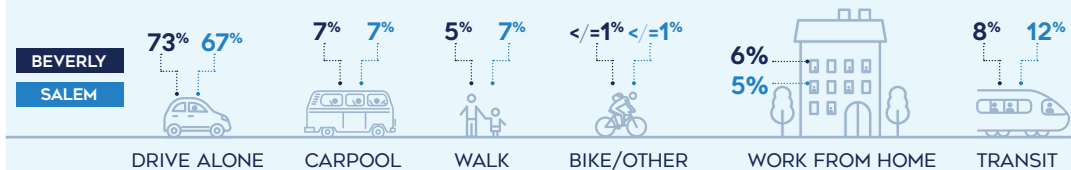


THEREFORE OUR CITIES ARE PARTNERING TO TAKE ACTION AND STRIVING TO EXCEED MASSACHUSETTS' COMMITMENT TO CARBON NEUTRALITY BY 2050.

PROGRESS-TO-DATE



HOW WE GET TO WORK



Beverly: US Census Longitudinal Employer-Household Dynamics (LEHD) Database, 2017. Salem: Imagine Salem

GHG EMISSIONS (2018)



GHG Emissions Data: Kim Lundgren Associates, Inc. (2020). Beverly and Salem Community and Municipal 2018 Greenhouse Gas Inventory, updated Oct 2020.

It would take a forest 103 times the size of Salem and 62 times the size of Beverly to offset their current carbon emissions.



THE RESILIENT TOGETHER CLIMATE ACTION PLAN WILL FOCUS ON:

Driving the transition to resilient and efficient buildings- new and existing- that are healthier and more affordable to own and operate.

Preparing our communities for emergencies while improving access to health care, wellness programs, and healthy foods.

Creating a safe, connected, and accessible multi-modal transportation system that prioritizes low-carbon mobility and promotes active lifestyles.

Enhancing stormwater management, wastewater treatment facilities, bridges and roads through green infrastructure and improved maintenance.

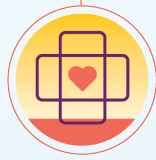


BUILDINGS & DEVELOPMENT

Preserving and enhancing the health of our local air quality, biodiversity, tree canopy, water quality, beaches, and shorelines, wildlife, and open spaces.



NATURAL RESOURCES



PUBLIC HEALTH & SAFETY

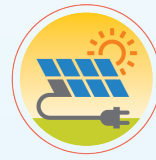
Educating and delivering to the community effective reduction, reuse, recycling, and composting programs.



SOLID WASTE



MOBILITY



ENERGY



INFRASTRUCTURE

Implementing policies and programs that foster the uptake of smart, reliable, clean energy generation and promote ongoing efficiency.

GUIDING PRINCIPLES

The following six guiding principles help set the foundation for the goals and actions of this plan, as well as set the tone for what is important to the community.



COMMUNITY RESILIENCE



ECONOMIC VITALITY



GHG EMISSIONS REDUCTIONS



RESTORATION & TRANSFORMATION

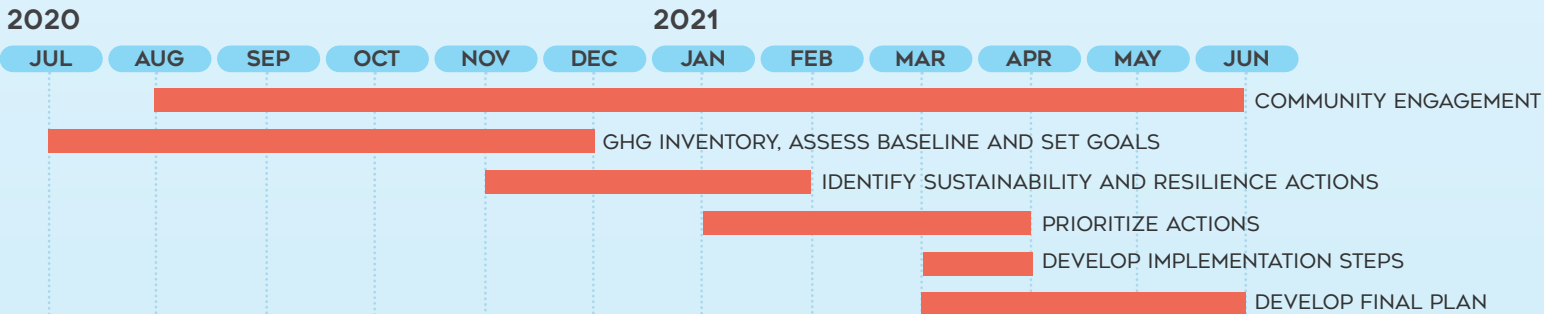


HEALTH



EQUITY

HOW WE'LL GET FROM HERE TO THERE



JOIN US AT [RESILIENTTOGETHER.ORG](https://resilienttogether.org)

THE PATH TO ENSURE A RESILIENT, HEALTHY FUTURE IS ONE WE WILL TAKE TOGETHER



ENGAGE
WITH US
ONLINE



TALK
WITH FRIENDS
& FAMILY



SHARE
FEEDBACK
WITH US