

abbotsfwd

Shape your city

Reuben Koole, Senior Planner, City of Abbotsford

June 14, 2016





1 ABOUT ABBOTSFORD

2 ABOUT ABBOTSFORWARD

3 ABOUT ENGAGEMENT

1

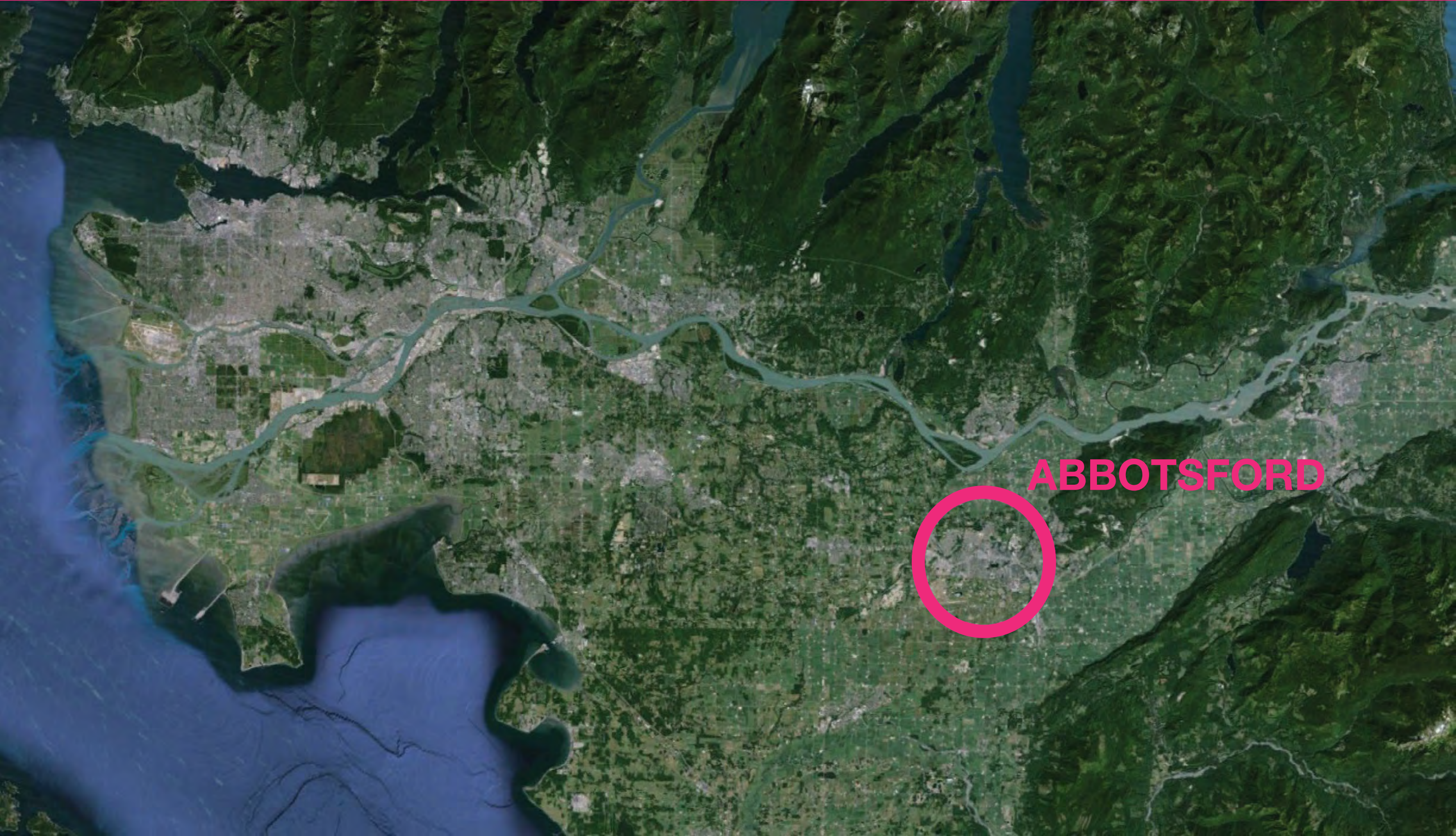
ABOUT ABBOTSFORD

2

ABOUT ABBOTSFORWARD

3

ABOUT ENGAGEMENT



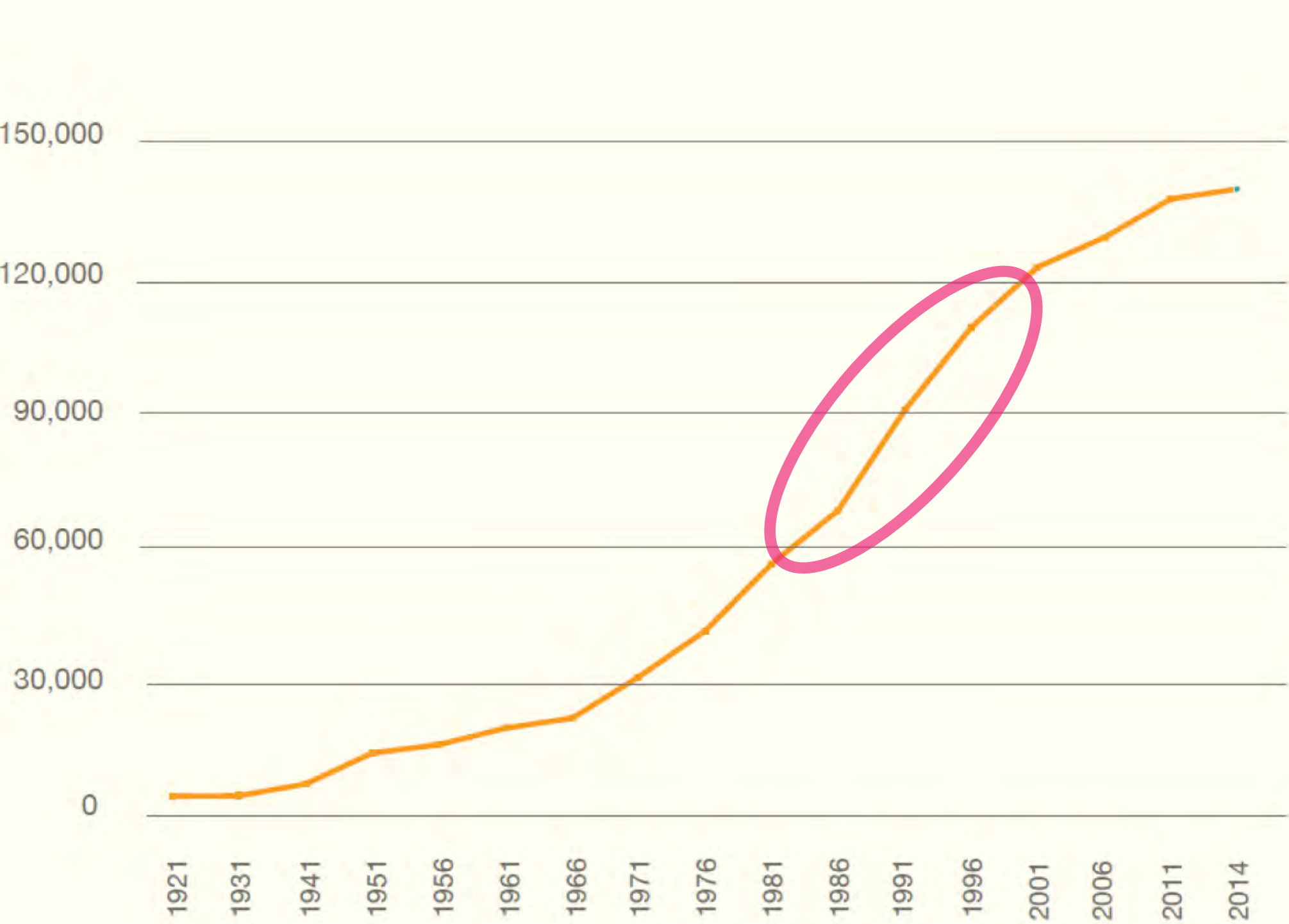
ABBOTSFORD



TOTAL LAND AREA = 389 km²



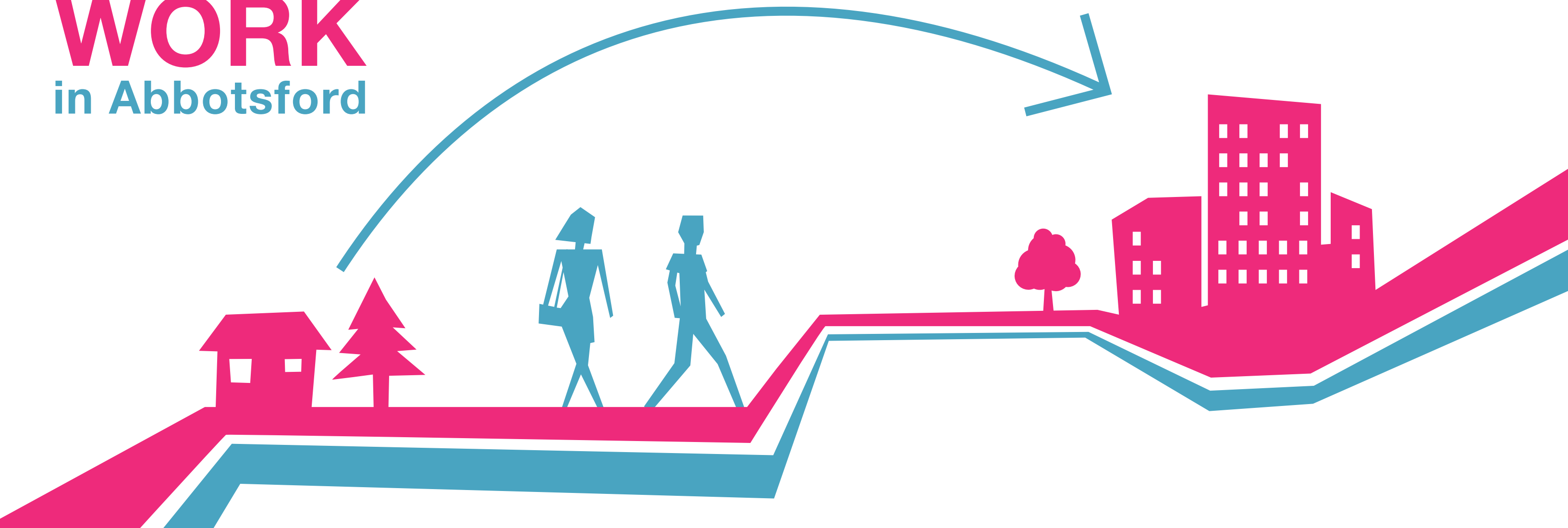
POPULATION 20% 80%



50%
from 1981
to 2000

65,000
people

65%
of our citizens
LIVE
+
WORK
in Abbotsford



1

ABOUT ABBOTSFORD

2

ABOUT ABBOTSFORWARD

3

ABOUT ENGAGEMENT

1 ABOUT ABBOTSFORD

2 ABOUT ABBOTSFORWARD

3 ABOUT ENGAGEMENT

ENGAGEMENT

1

Background
research

May-Oct 2014

2

Explore new
concepts

Oct 2014 - May 2015

3


Create the
Plan

May 2015 - Apr 2016

4

Complete the
Plan

Apr - Jun 2016

- 
- 1 Undertake a robust community engagement process
 - 2 Understand current land use inventory and future trends
 - 3 Align plans and strategies with the OCP
 - 4 Clarify and add detail to the City's land use designations
 - 5 Integrate the OCP with servicing capacity and strategies
 - 6 Establish infill and redevelopment guidelines
 - 7 Create a framework for neighbourhood planning

1 CREATE A CITY CENTRE



2 ESTABLISH DISTINCT & COMPLETE NEIGHBOURHOODS



3 MAKE WALKING, BIKING & TRANSIT DELIGHTFUL



4 MAKE PLACES FOR PEOPLE



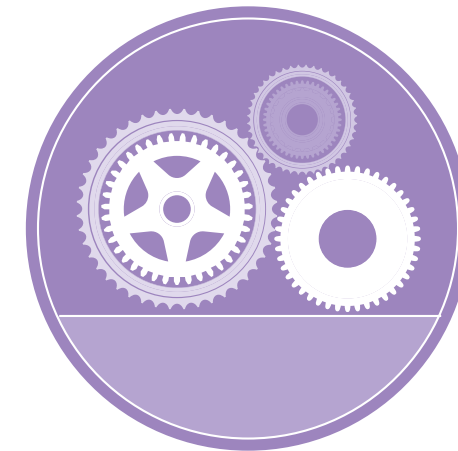
5 IMPROVE NATURAL & BUILT SYSTEMS



6 ENHANCE AGRICULTURAL INTEGRITY



7 MAKE THE PLAN WORK





abbotsfwd

CITY OF
ABBOTSFORD
**OFFICIAL
COMMUNITY
PLAN**



- city of centres-
- grow in not out-
- use + transportation-
- streets as destinations-
- innovative infill-
- kick a** engagement-

1 ABOUT ABBOTSFORD

2 ABOUT ABBOTSFORWARD

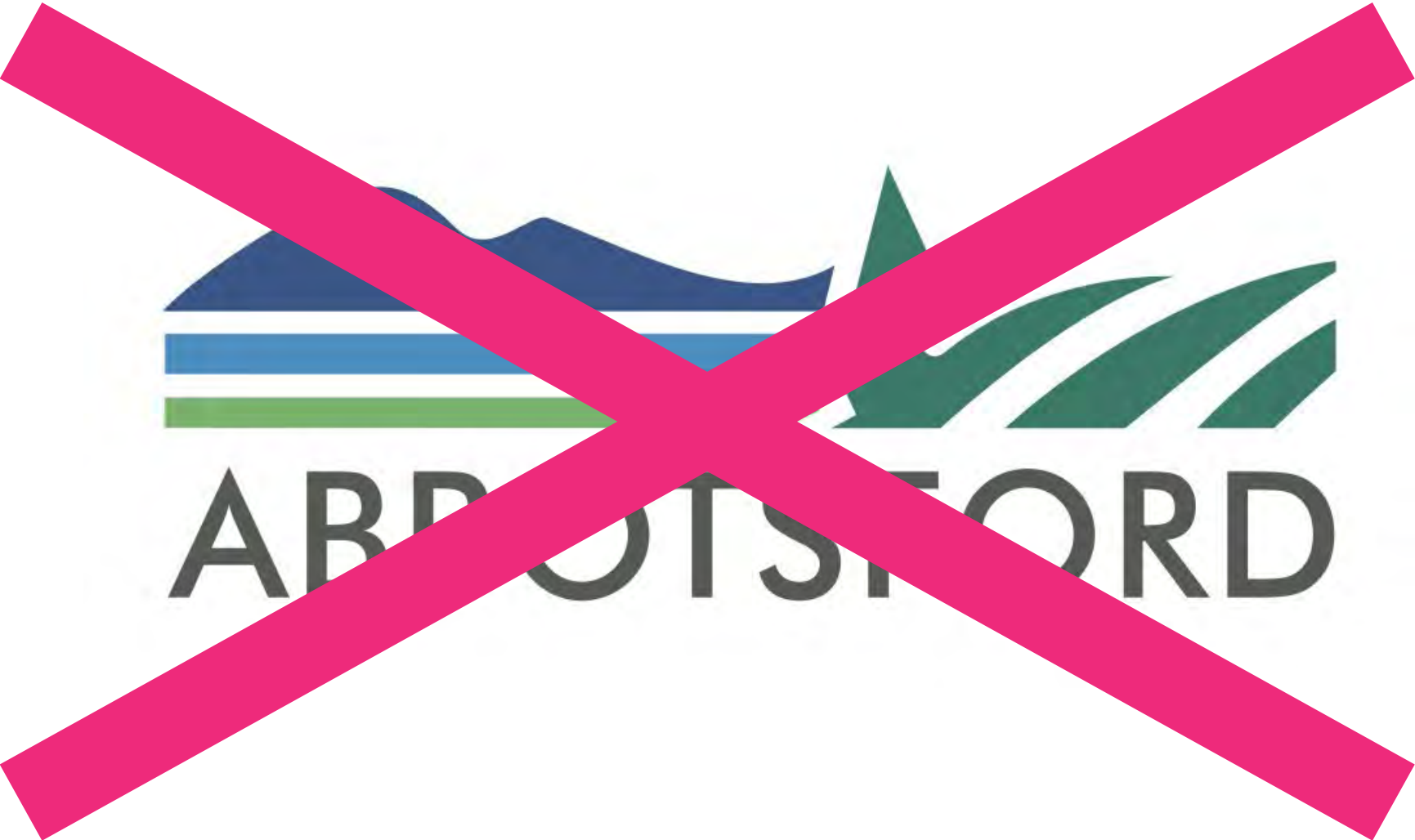
3 ABOUT ENGAGEMENT

1 ABOUT ABBOTSFORD

2 ABOUT ABBOTSFORWARD

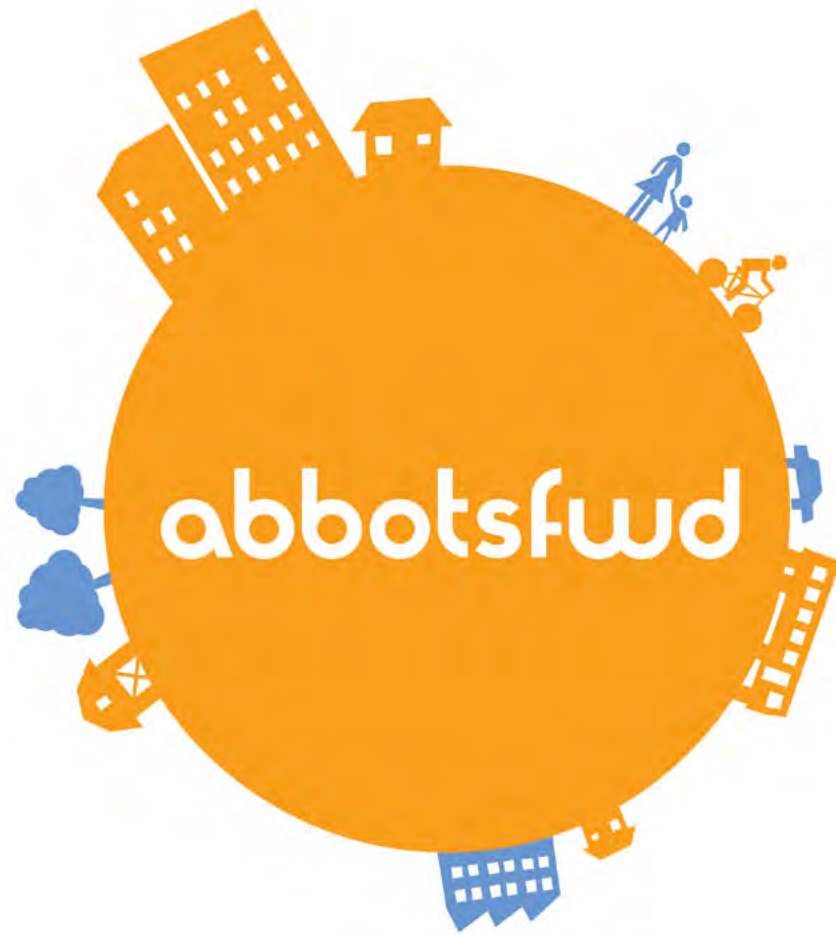
3 ABOUT ENGAGEMENT





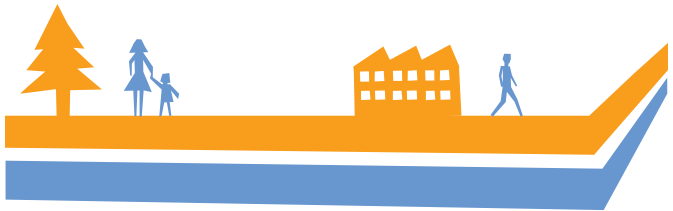
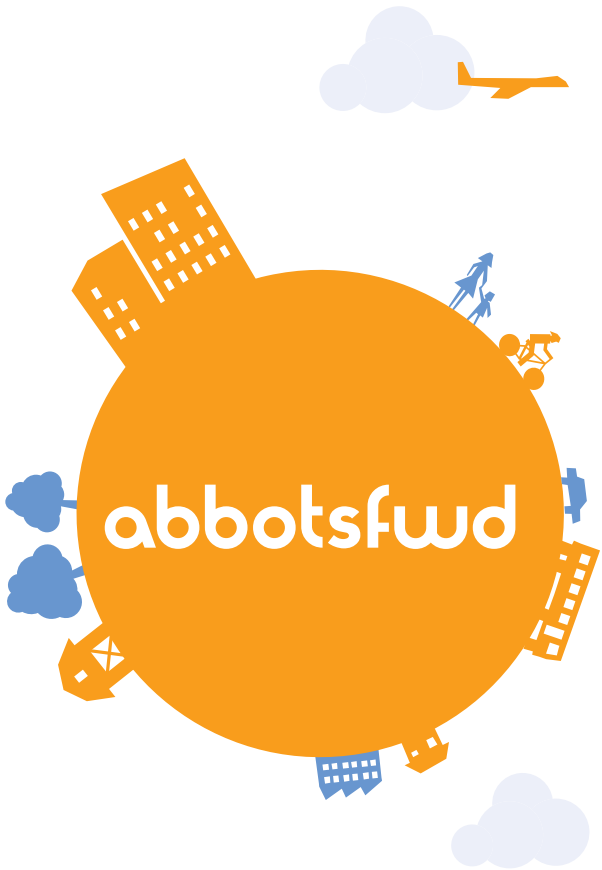
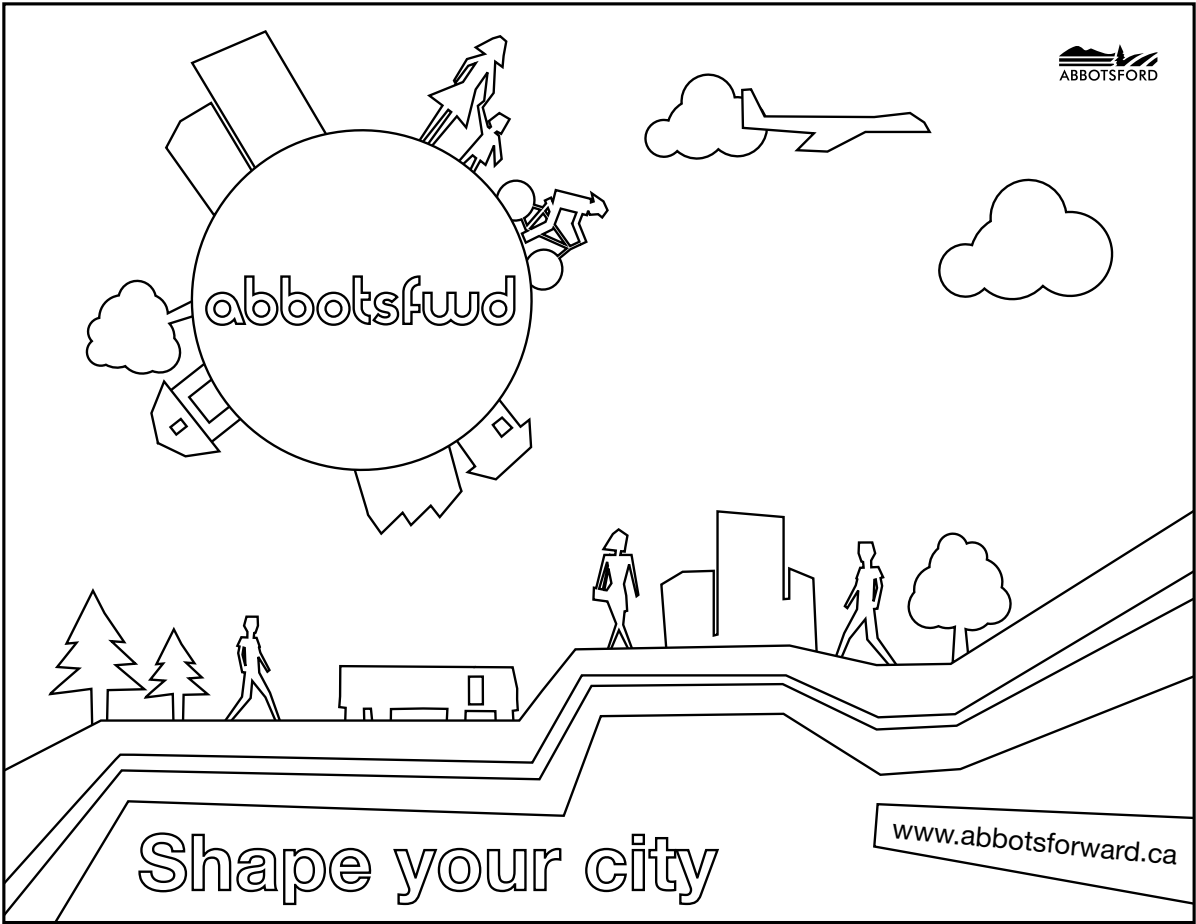
BRAND, BRAND, BRAND

abbotsfwd



abbotsfwd







City Page

April 29, 2016

Notice of Public Hearing

Item 10 - Development of a New Public Library

The City of Abbotsford is currently in the process of developing a new public library. The proposed site is located at the intersection of Highway 1 and Highway 101. The City is seeking public input on the proposed development.

The following information is provided for your information:

- Proposed Site:** The proposed site is located at the intersection of Highway 1 and Highway 101.
- Proposed Development:** The proposed development is a new public library.
- Public Hearing:** A public hearing will be held on May 10, 2016, at 7:00 PM.

ABBOTSFORD PUBLIC LIBRARY - NEW

Site: 101-101-101-101



PROPOSED LAND: 101-101-101-101
PROPOSED DEVELOPMENT: 101-101-101-101
PROPOSED DEVELOPMENT: 101-101-101-101

ABBOTSFORD PUBLIC LIBRARY - NEW

Site: 101-101-101-101



PROPOSED LAND: 101-101-101-101
PROPOSED DEVELOPMENT: 101-101-101-101
PROPOSED DEVELOPMENT: 101-101-101-101

Are You Ready for the BIG ONE?

The City of Abbotsford is currently in the process of developing a new public library. The proposed site is located at the intersection of Highway 1 and Highway 101. The City is seeking public input on the proposed development.

The following information is provided for your information:

- Proposed Site:** The proposed site is located at the intersection of Highway 1 and Highway 101.
- Proposed Development:** The proposed development is a new public library.
- Public Hearing:** A public hearing will be held on May 10, 2016, at 7:00 PM.

COUNCIL BRIEF

The City of Abbotsford is currently in the process of developing a new public library. The proposed site is located at the intersection of Highway 1 and Highway 101. The City is seeking public input on the proposed development.

The following information is provided for your information:

- Proposed Site:** The proposed site is located at the intersection of Highway 1 and Highway 101.
- Proposed Development:** The proposed development is a new public library.
- Public Hearing:** A public hearing will be held on May 10, 2016, at 7:00 PM.

www.abbotsford.ca



Let's make
South Fraser Way
pedestrian-only.

This is Julie's idea. What's yours?

We're looking for your input on how we can make
Abbotsford a better city.

Shape your city
abbotsforward.ca



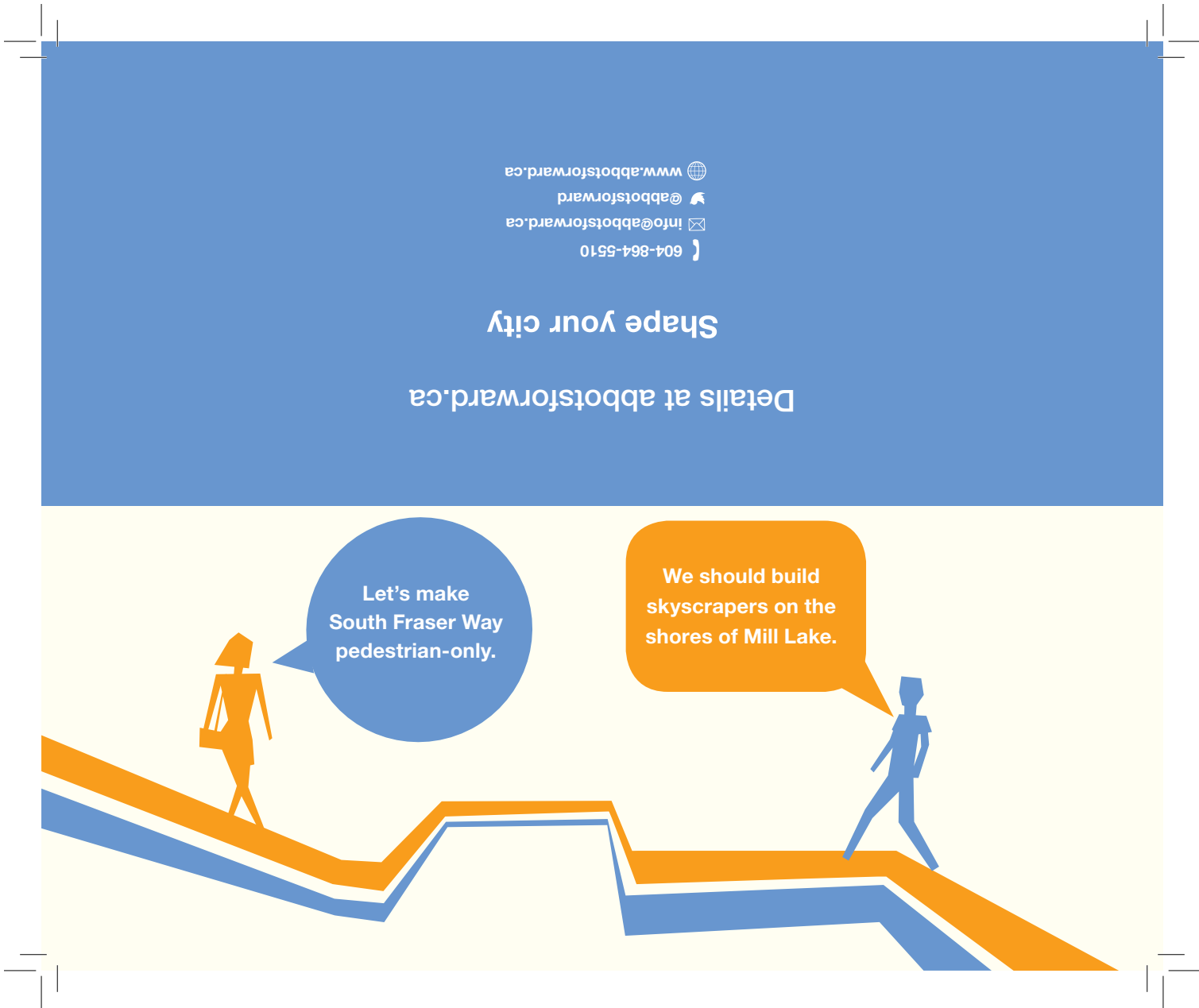
We should build
skyscrapers on
the shores of
Mill Lake.

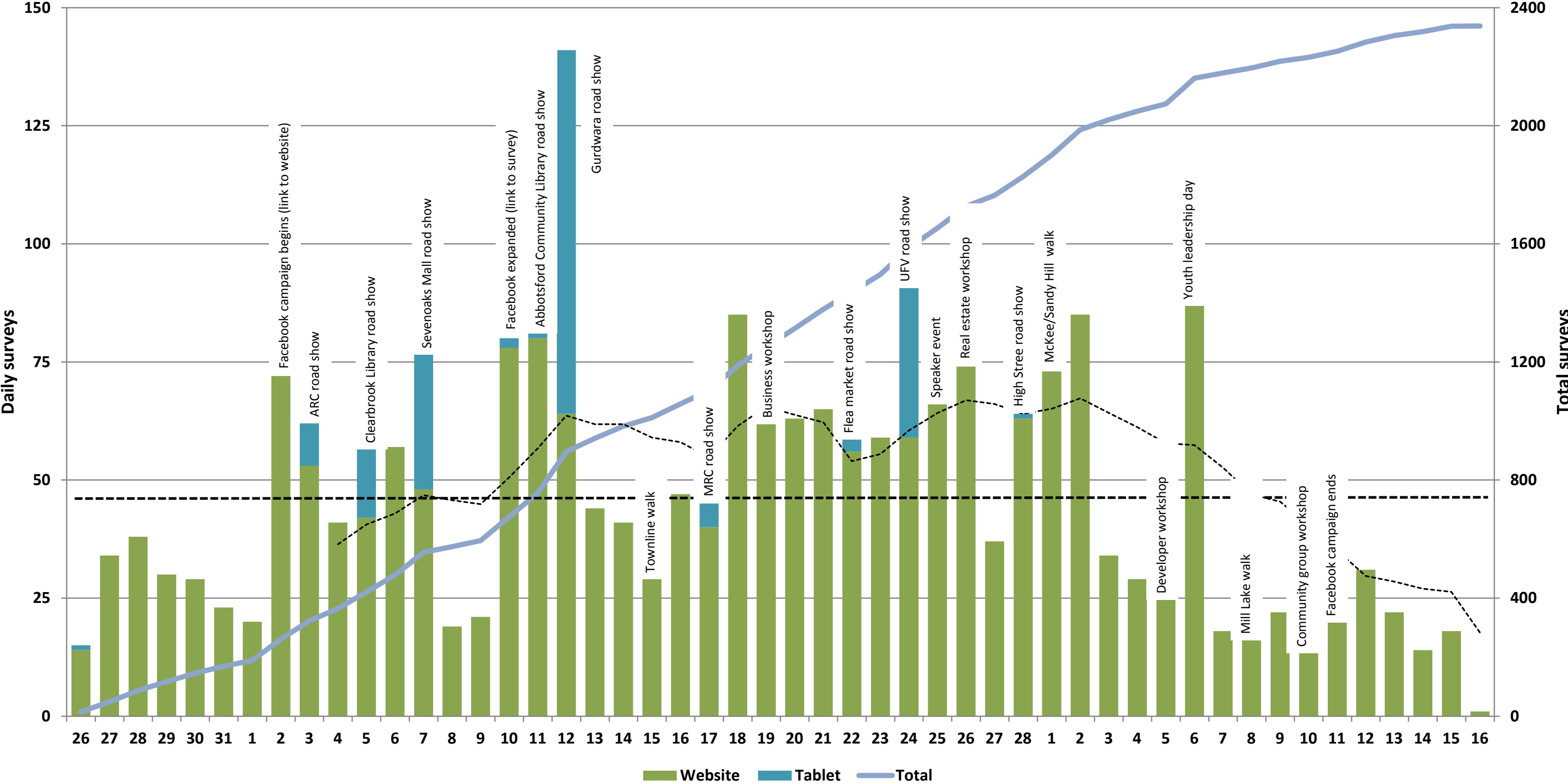
This is Mike's idea. What's yours?

We're looking for your input on how we can make
Abbotsford a better city.

Shape your city
abbotsforward.ca







...because as we know, there are known knowns; there are things that we know that we know. We also know there are known unknowns; that is to say we know there are some things we do not know. But there are also unknown unknowns, the ones we don't know we don't know.

...because as we know, there are known
knowns; there are things that we know that
we know. We also know there are known
unknowns; that is to say we know there are
some things we don't know. But there are
also unknown unknowns, things we don't
know we don't know.

SPEAK HUMAN

abbotsfwd

Take a quick online survey

abbotsfwd

What does Abbotsford with
200,000 people look like?
abbotsforward.ca




60,000

people are coming,
where will they live?

abbotsforward.ca





abbotsfwd thinking

build a better city

FEB 25
DOORS OPEN 6:30PM
EVENT STARTS 7:00PM

THE REACH
GALLERY MUSEUM
32388 VETERANS WAY

7:00PM
Mayor's welcome

7:10PM
Jeffrey Tumlin

7:45PM
Brent Toderian


8:15PM
Q & A Period

8:45PM
Mix & Mingle

Abbotsforward is about building a better city.


Join two renowned guest speakers as they talk about how cities can plan better to help their communities thrive.

Space is limited.



JEFFREY TUMLIN

Jeff has developed transformative plans throughout the world that accommodate millions of square feet of growth with no net increase in motor vehicle traffic. He has led multiple award-winning projects and has planned in cities such as **Seattle, Moscow and Santa Monica.**



BRENT TODERIAN


Brent Toderian is a nationally and internationally respected practitioner and leader with 23 years of experience in advanced urbanism, city planning and urban design. He has worked with cities as diverse as **Sydney, Auckland, Oslo, London (Ontario), Regina, & now Abbotsford!**

604-864-5510

info@abbotsforward.ca

@abbotsforward

www.abbotsforward.ca





**Create a
City Centre**



**Establish Distinct and
Complete Neighbourhoods**



**Make Walking, Biking,
and Transit Delightful**



**Make Places
for People**



**Improve Natural
and Built Systems**



**Enhance
Agricultural Integrity**



**Make the
Plan Work**

GO TO PEOPLE

abbotsfwd





GO TO PEOPLE

abbotsfwd



ONLINE SURVEY



SPEAKER EVENT



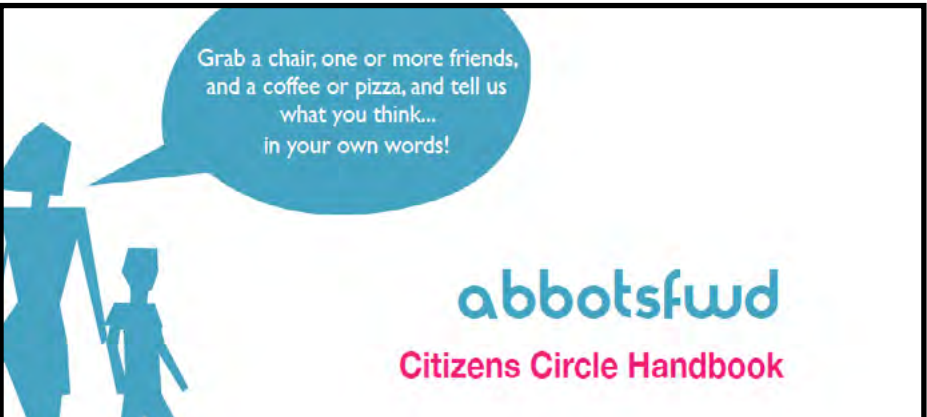
ROADSHOW EVENTS



STAKEHOLDER WORKSHOPS



BIG IDEAS FAIR



CITIZEN CIRCLES



NEIGHBOURHOOD WALKS



SOCIAL MEDIA



CAC

GO TO PEOPLE

abbotsfwd

COME SEE THE DRAFT PLAN!
FOOD TRUCKS - LIVE MUSIC - MINI GOLF

APRIL 15-17

SEVENOAKS SHOPPING CENTRE PARKING LOT
GLADWIN & SOUTH FRASER WAY

FRIDAY 1PM-7PM

SATURDAY 10AM-7PM

SUNDAY 10AM-4PM

abbotsforward.ca



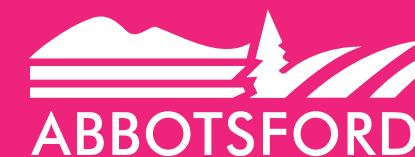
popup park

📞 604-864-5510

✉ info@abbotsforward.ca

🐦 @abbotsforward

🌐 www.abbotsforward.ca



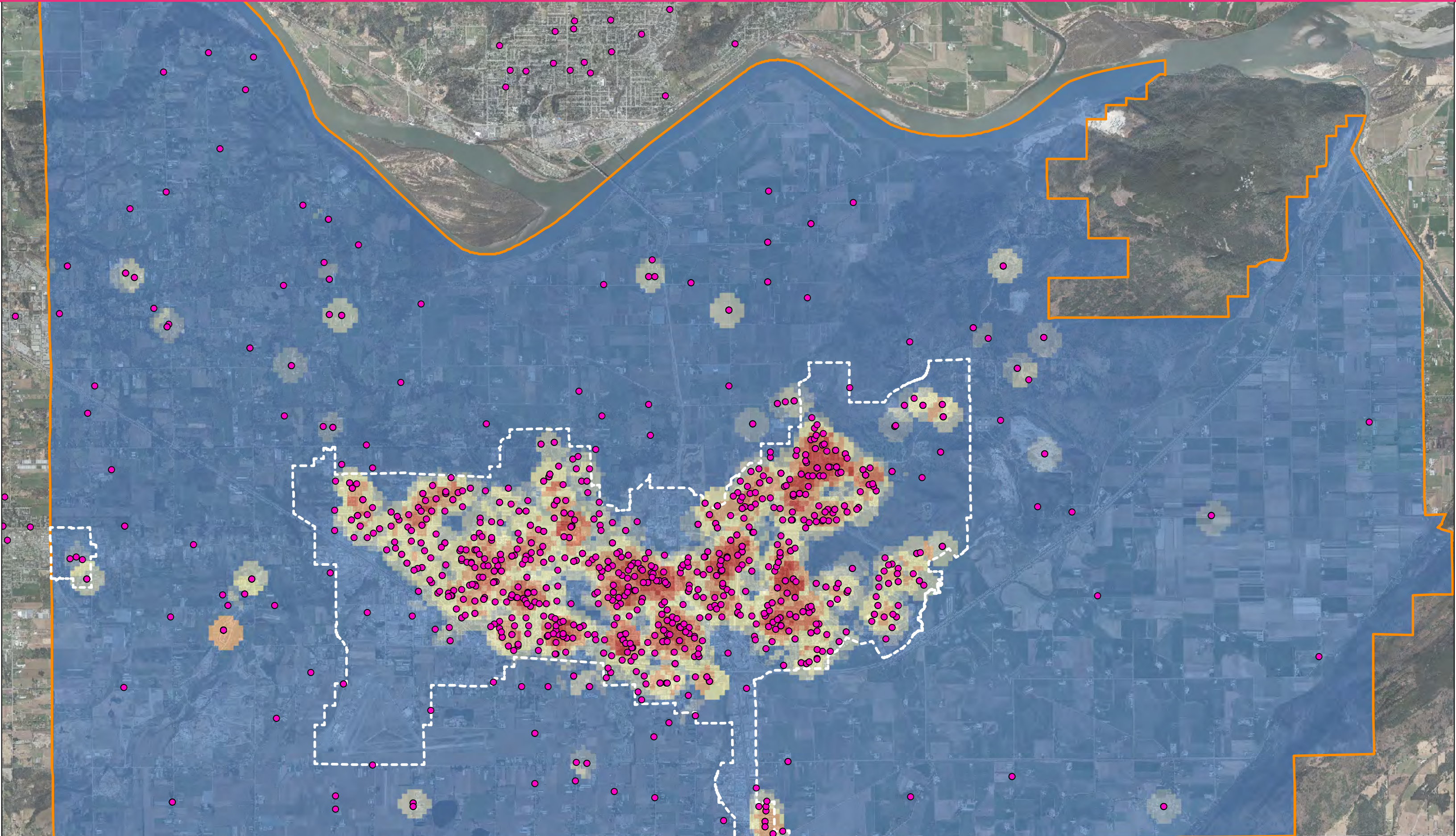
GO TO PEOPLE

abbotsfwd





~8,000 interactions

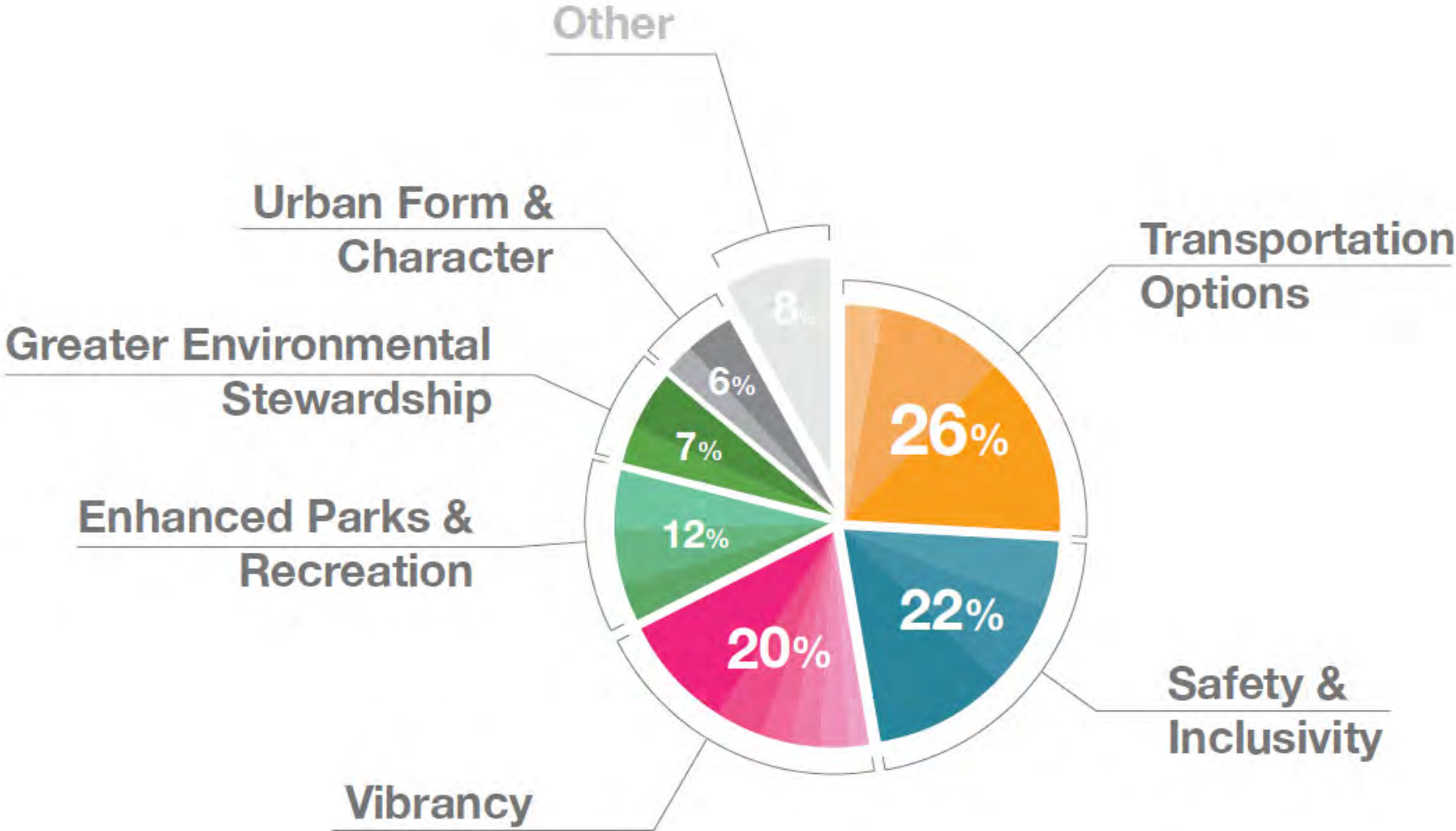


abbotsfwd

CITY OF
ABBOTSFORD
**OFFICIAL
COMMUNITY
PLAN**



- calculated risks-
 - open + transparent-
 - mix methods-
 - consistent message-
-
- = exceeds expectations**



Support transit improvements, such as routes and exchanges, buses, and stops.



- *Include connections with neighbouring municipalities and increase frequency so that it is a reliable alternative to cars. It is still a non-functioning system*
- *We greatly need better transit service with far more route options than what we have now*

Design streets to prioritize vehicles over all other transportation methods (such as transit, bicycles, pedestrians).



- *This is how we've been doing things, and it does not take us forward it drags us backwards*
- *I find the requirement of having a car to get around to be one of the least attractive things about living here, and one of the biggest incentives to leave*

Design some streets to prioritize people gathering, such as shared streets or closures for community events.



- *We need to find ways to encourage building of relationships with our immediate neighbours in all neighbourhoods of the city, not just a few. But such design mentioned here could be one way of doing this*
- *Expand the street closures in downtown Abbotsford for the farmers market and other events, such as berryfest*

abbotsfwd

Shape your city

Reuben Koole
City of Abbotsford
604.557.1468 | rkoole@abbotsford.ca

www.abbotsforward.ca
[@abbotsforward](https://twitter.com/abbotsforward)

